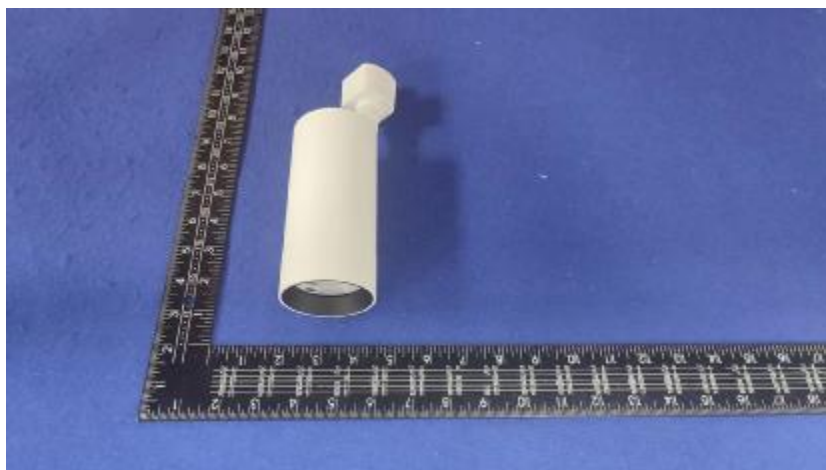


Luminaire Photograph



Light Output Ratio:	84.9%	
Luminaire Power:	20.74 W	
SHR Nominal:	0.00	Calculated using the TM5
SHR Maximum:	1.00	fine grid method.

C Range: 0 - 360DEG
 C Interval: 30.0DEG
 Test Speed: HIGH
 Temperature: 25.3DEG
 Operators: Zoe
 Test Date: 2022-12-12

Range: 0 - 180DEG
 Interval: 1.0DEG
 Test System: EVERFINE GO-SPEX500_V1 SYSTEM V2.00.416
 Humidity: 65.0%
 Test Distance: 3.160m [K=1.0000]
 Remarks: LAMP: BXRE-30G1000-A-83 Ra: 90
 LENS: TH-YL5023H-24D 24R
 DRIVER: RISE 120V 500mA
 30minutes warm-up

LUMINOUS INTENSITY DISTRIBUTION DIAGRAM

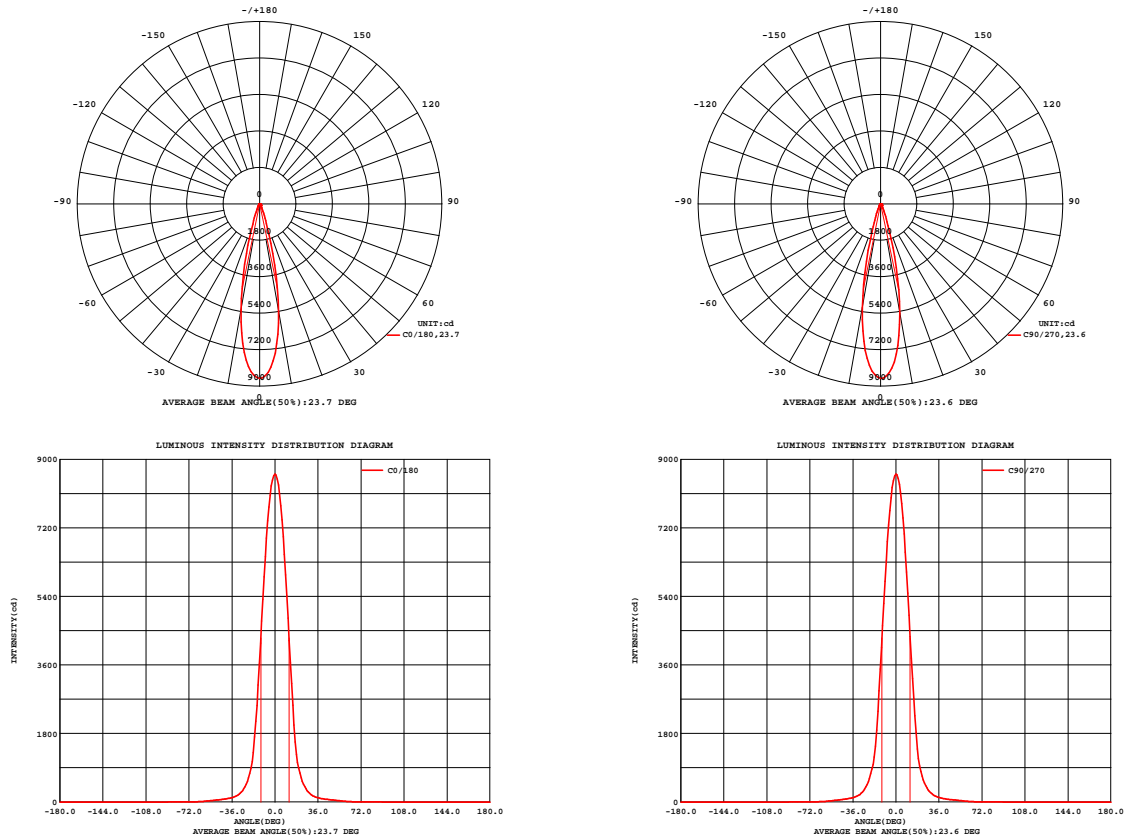


Fig. C0/C180

Fig. C90/C270

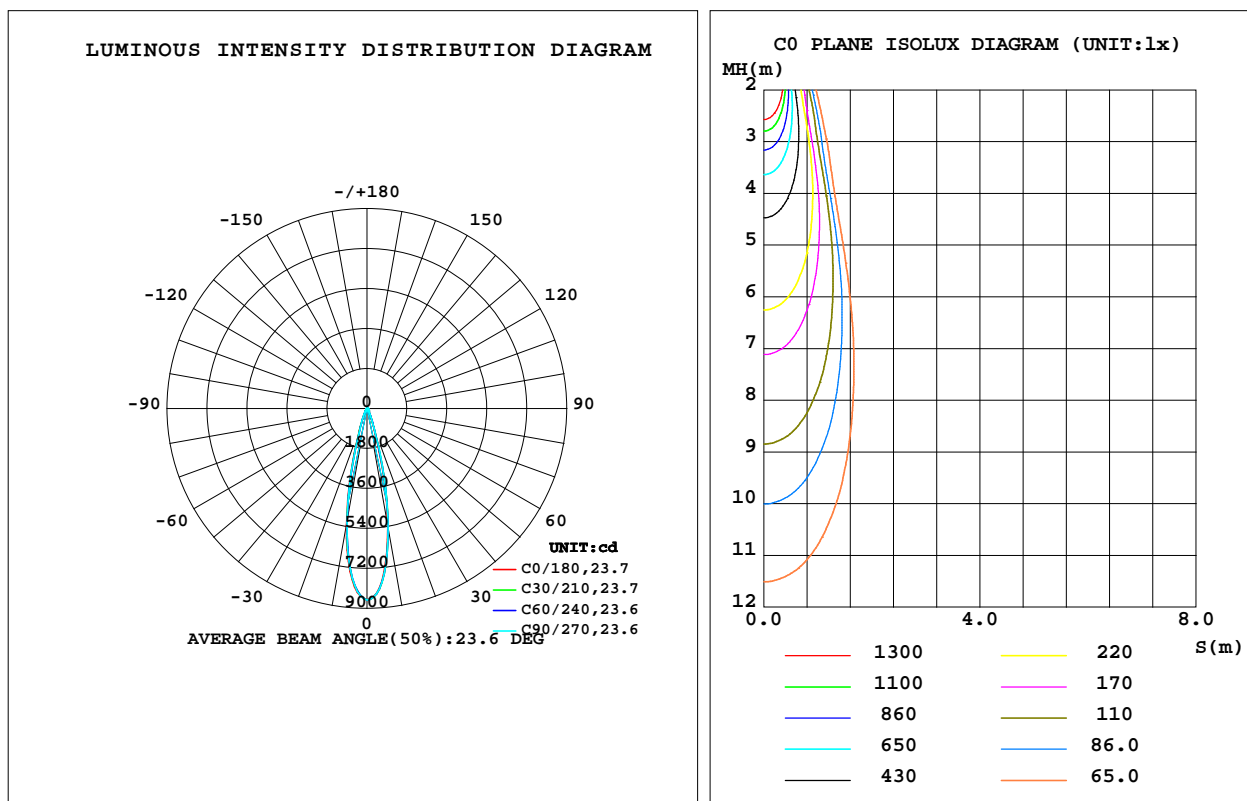
C Range: 0 - 360DEG
C Interval: 30.0DEG
Test Speed: HIGH
Temperature: 25.3DEG
Operators: Zoe
Test Date: 2022-12-12

Range: 0 - 180DEG
Interval: 1.0DEG
Test System: EVERFINE GO-SPEX500_V1 SYSTEM V2.00.416
Humidity: 65.0%
Test Distance: 3.160m [K=1.0000]
Remarks: LAMP: BXRE-30G1000-A-83 Ra: 90
LENS: TH-YL5023H-24D 24R
DRIVER: RISE 120V 500mA
30minutes warm-up

LUMINAIRE PHOTOMETRIC TEST REPORT

Test:U:120.03V I:0.1744A P:20.736W PF:0.9892 Freq:59.98Hz Lamp Flux:2052.9x1 lm					
NAME: 2319.200-H3AM-500			TYPE:		WEIGHT:
SPEC.:3000K			DIM.:		SERIAL No.:2212121316
MFR.: RISE			SUR.:0.002826m2		Shielding Angle:

DATA OF LAMP		PHOTOMETRIC DATA				Eff: 84.02 lm/W
MODEL	Bridgelux	I _{max} (cd)	8614	S/MH(C0/180)	0.39	
NOMINAL POWER(W)	20	LOR(%)	84.9	S/MH(C90/270)	0.38	
RATED VOLTAGE(V)	120	TOTAL FLUX(lm)	1742.3	UP,DN(C0-180)	0.0,42.8	
NOMINAL FLUX(lm)	2052.9	CIE CLASS	DIRECT	UP,DN(C180-360)	0.0,42.1	
LAMPS INSIDE	1	up(%)	0.0	CIBSE SHR NOM	0.00	
TEST VOLTAGE(V)	120	down(%)	84.9	CIBSE SHR MAX	1.00	



C Range: 0 - 360DEG
C Interval: 30.0DEG
Test Speed: HIGH
Temperature:25.3DEG
Operators:Zoe
Test Date:2022-12-12

Range: 0 - 180DEG
Interval: 1.0DEG
Test System:EVERFINE GO-SPEX500_V1 SYSTEM V2.00.416
Humidity:65.0%
Test Distance:3.160m [K=1.0000]
Remarks: LAMP:BXRE-30G1000-A-83 Ra:90
LENS: TH-YL5023H-24D 24R
DRIVER: RISE 120V 500mA
30minutes warm-up

ZONAL FLUX DIAGRAM

ZONAL FLUX DIAGRAM:

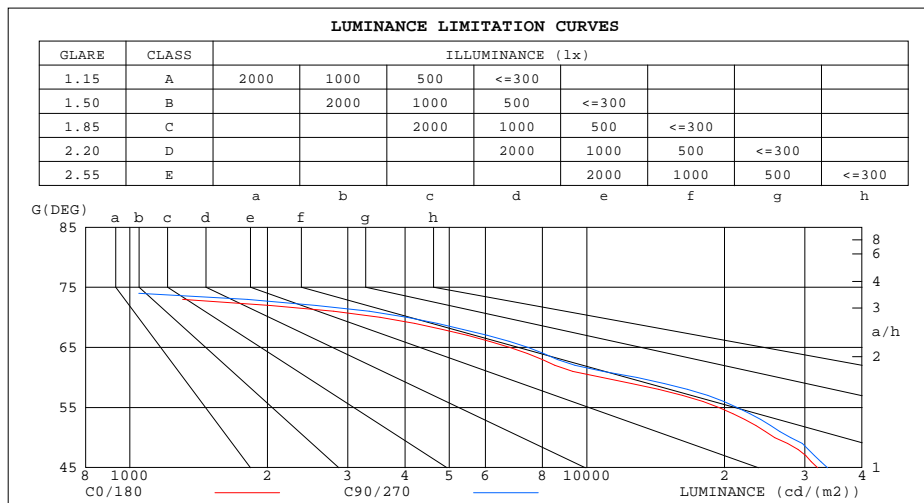
	C0	C45	C90	C135	C180	C225	C270	C315		zone	total	%lum,lamp
10	5409	5500	5484	5208	5328	5201	5215	5504	0- 10	662.6	662.6	38,32.3
20	887.0	938.3	947.1	877.6	889.9	866.0	866.0	925.7	10- 20	706.6	1369	78.6,66.7
30	201.6	215.1	223.8	204.3	208.4	201.8	201.5	214.5	20- 30	203.0	1572	90.2,76.6
40	85.92	88.60	91.21	86.23	87.23	86.53	87.99	89.17	30- 40	82.17	1654	95,80.6
50	46.87	48.52	50.73	48.00	47.49	45.89	46.54	47.16	40- 50	50.81	1705	97.9,83.1
60	15.27	16.75	18.19	15.89	15.37	13.43	13.49	15.04	50- 60	28.08	1733	99.5,84.4
70	3.415	3.455	3.906	3.306	3.349	2.717	2.891	3.226	60- 70	8.103	1741	100,84.8
80	0.0869	0.0700	0.0784	0.0604	0.0683	0.0457	0.0543	0.0369	70- 80	0.8079	1742	100,84.9
90	0	0	0	0	0	0	0	0	80- 90	0.0508	1742	100,84.9
100	0	0	0	0	0	0	0	0	90-100	0	1742	100,84.9
110	0	0	0	0	0	0	0	0	100-110	0	1742	100,84.9
120	0	0	0	0	0	0	0	0	110-120	0	1742	100,84.9
130	0	0	0	0	0	0	0	0	120-130	0	1742	100,84.9
140	0	0	0	0	0	0	0	0	130-140	0	1742	100,84.9
150	0	0	0	0	0	0	0	0	140-150	0	1742	100,84.9
160	0	0	0	0	0	0	0	0	150-160	0	1742	100,84.9
170	0	0	0	0	0	0	0	0	160-170	0	1742	100,84.9
180	0	0	0	0	0	0	0	0	170-180	0	1742	100,84.9
DEG	LUMINOUS INTENSITY:cd									UNIT:lm		

C Range: 0 - 360DEG
C Interval: 30.0DEG
Test Speed: HIGH
Temperature:25.3DEG
Operators:Zoe
Test Date:2022-12-12

Range: 0 - 180DEG
Interval: 1.0DEG
Test System:EVERFINE GO-SPEX500_V1 SYSTEM V2.00.416
Humidity:65.0%
Test Distance:3.160m [K=1.0000]
Remarks: LAMP:BXRE-30G1000-A-83 Ra:90
LENS: TH-YL5023H-24D 24R
DRIVER: RISE 120V 500mA
30minutes warm-up

LUMINANCE LIMITATION CURVES

Test:U:120.03V I:0.1744A P:20.736W PF:0.9892 Freq:59.98Hz Lamp Flux:2052.9x1 lm		
NAME: 2319.200-H3AM-500	TYPE:	WEIGHT:
SPEC.:3000K	DIM.:	SERIAL No.:2212121316
MFR.: RISE	SUR.:0.002826m2	Shielding Angle:



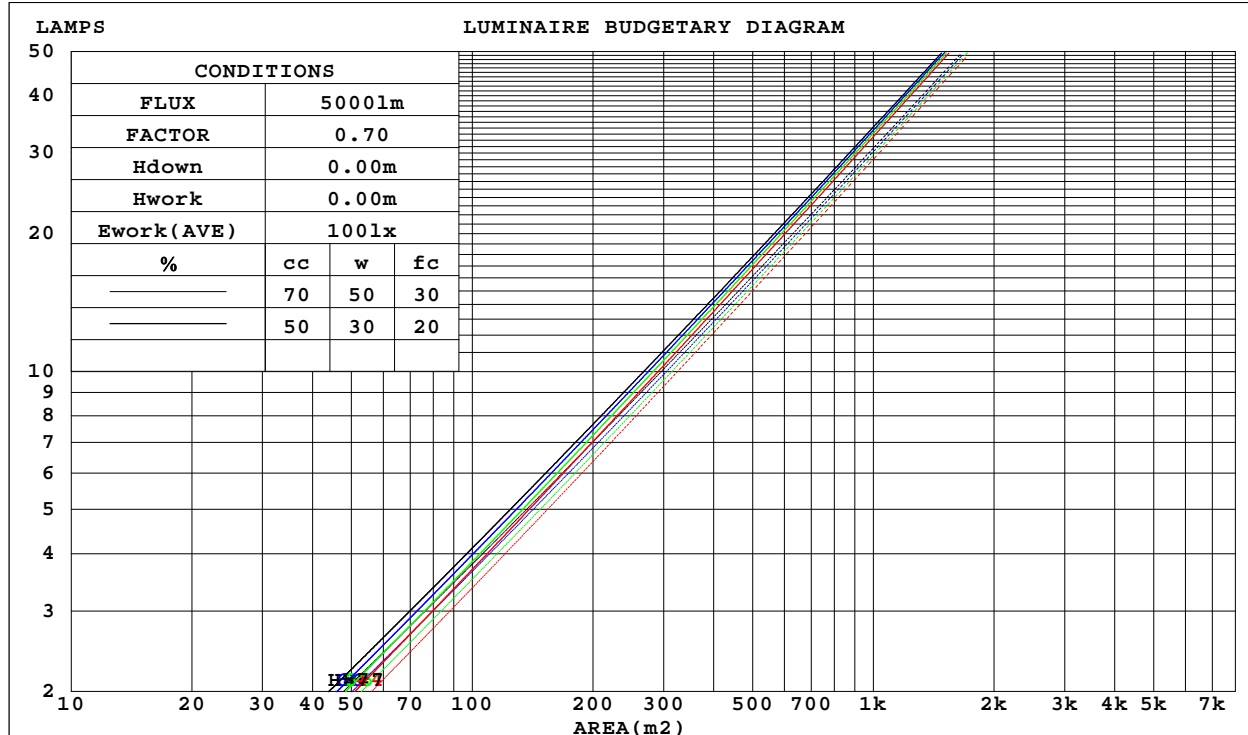
C Range: 0 - 360DEG
C Interval: 30.0DEG
Test Speed: HIGH
Temperature:25.3DEG
Operators:Zoe
Test Date:2022-12-12

Range: 0 - 180DEG
Interval: 1.0DEG
Test System:EVERFINE GO-SPEX500_V1 SYSTEM V2.00.416
Humidity:65.0%
Test Distance:3.160m [K=1.0000]
Remarks: LAMP:BXRE-30G1000-A-83 Ra:90
LENS: TH-YL5023H-24D 24R
DRIVER: RISE 120V 500mA
30minutes warm-up

CU AND LUMINAIRE BUDGETARY ESTIMATE DIAGRAM

Test:U:120.03V I:0.1744A P:20.736W PF:0.9892 Freq:59.98Hz Lamp Flux:2052.9x1 lm		
NAME: 2319.200-H3AM-500	TYPE:	WEIGHT:
SPEC.:3000K	DIM.:	SERIAL No.:2212121316
MFR.: RISE	SUR.:0.002826m2	Shielding Angle:

cc	80%			70%			50%			30%			10%			0
w	50%	30%	10%	50%	30%	10%	50%	30%	10%	50%	30%	10%	50%	30%	10%	0
fc	20%			20%			20%			20%			20%			0
RCR	RCR:Room Cavity Ratio			Coefficients of Utilization(CU)												
0.0	1.01	1.01	1.01	.99	.99	.99	.94	.94	.94	.90	.90	.90	.87	.87	.87	.85
1.0	.96	.94	.93	.94	.92	.91	.90	.89	.88	.87	.86	.86	.84	.84	.83	.82
2.0	.91	.88	.86	.90	.87	.85	.87	.85	.83	.84	.83	.82	.82	.81	.80	.79
3.0	.87	.84	.81	.86	.83	.81	.84	.81	.79	.82	.80	.78	.80	.78	.77	.76
4.0	.83	.80	.77	.82	.79	.77	.81	.78	.76	.79	.77	.75	.78	.76	.74	.73
5.0	.80	.77	.74	.79	.76	.74	.78	.75	.73	.77	.74	.72	.76	.74	.72	.71
6.0	.77	.74	.71	.77	.73	.71	.76	.73	.70	.75	.72	.70	.74	.71	.70	.69
7.0	.75	.71	.69	.74	.71	.69	.73	.70	.68	.73	.70	.68	.72	.69	.68	.67
8.0	.73	.69	.67	.72	.69	.66	.71	.68	.66	.71	.68	.66	.70	.67	.66	.65
9.0	.70	.67	.65	.70	.67	.64	.69	.66	.64	.69	.66	.64	.68	.66	.64	.63
10.0	.69	.65	.63	.68	.65	.63	.68	.65	.63	.67	.64	.62	.67	.64	.62	.62



C Range: 0 - 360DEG
C Interval: 30.0DEG
Test Speed: HIGH
Temperature:25.3DEG
Operators:Zoe
Test Date:2022-12-12

Range: 0 - 180DEG
Interval: 1.0DEG
Test System:EVERFINE GO-SPEX500_V1 SYSTEM V2.00.416
Humidity:65.0%
Test Distance:3.160m [K=1.0000]
Remarks: LAMP:BXRE-30G1000-A-83 Ra:90
LENS: TH-YL5023H-24D 24R
DRIVER: RISE 120V 500mA
30minutes warm-up



WEC AND CCEC

Test:U:120.03V I:0.1744A P:20.736W PF:0.9892 Freq:59.98Hz Lamp Flux:2052.9x1 lm					
NAME: 2319.200-H3AM-500			TYPE:		WEIGHT:
SPEC.:3000K			DIM.:		SERIAL No.:2212121316
MFR.: RISE			SUR.:0.002826m2		Shielding Angle:

cc	80%			70%			50%			30%			10%			0														
w	50%	30%	10%	50%	30%	10%	50%	30%	10%	50%	30%	10%	50%	30%	10%	0														
fc	20%			20%			20%			20%			20%			0														
RCR	RCR:Room Cavity Ratio															Wall Exitance Coefficients(WEC)														
0.0																														
1.0	.119	.068	.021	.114	.065	.021	.103	.059	.019	.093	.054	.017	.084	.049	.016															
2.0	.111	.061	.019	.107	.059	.018	.098	.054	.017	.090	.050	.016	.082	.047	.015															
3.0	.104	.055	.017	.100	.054	.016	.093	.050	.015	.086	.047	.014	.080	.044	.014															
4.0	.097	.051	.015	.094	.049	.015	.088	.047	.014	.082	.044	.013	.077	.042	.013															
5.0	.092	.047	.014	.089	.046	.013	.084	.043	.013	.079	.042	.012	.074	.040	.012															
6.0	.086	.043	.012	.084	.042	.012	.080	.041	.012	.075	.039	.012	.071	.038	.011															
7.0	.082	.040	.011	.080	.040	.011	.076	.038	.011	.072	.037	.011	.069	.036	.011															
8.0	.078	.038	.011	.076	.037	.011	.073	.036	.010	.069	.035	.010	.066	.034	.010															
9.0	.074	.036	.010	.073	.035	.010	.070	.034	.010	.067	.033	.010	.064	.033	.009															
10.0	.071	.034	.009	.069	.034	.009	.067	.033	.009	.064	.032	.009	.062	.031	.009															

cc	80%			70%			50%			30%			10%			0
w	50%	30%	10%	50%	30%	10%	50%	30%	10%	50%	30%	10%	50%	30%	10%	0
fc	20%			20%			20%			20%			20%			0
RCR	RCR:Room Cavity Ratio			Ceiling Cavity Exitance Coefficients(CCEC)												
0.0	.162	.162	.162	.138	.138	.138	.094	.094	.094	.054	.054	.054	.017	.017	.017	
1.0	.143	.134	.125	.122	.115	.108	.084	.079	.075	.048	.046	.043	.015	.015	.014	
2.0	.128	.113	.100	.110	.097	.086	.075	.067	.060	.043	.039	.035	.014	.013	.011	
3.0	.115	.096	.081	.099	.083	.070	.068	.058	.049	.039	.034	.029	.013	.011	.009	
4.0	.105	.083	.066	.090	.072	.058	.062	.050	.041	.036	.029	.024	.012	.010	.008	
5.0	.096	.073	.055	.083	.063	.048	.057	.044	.034	.033	.026	.020	.011	.008	.007	
6.0	.089	.064	.047	.076	.056	.041	.053	.039	.029	.030	.023	.017	.010	.007	.006	
7.0	.082	.057	.040	.071	.050	.035	.049	.035	.025	.028	.021	.015	.009	.007	.005	
8.0	.077	.052	.035	.066	.045	.030	.046	.031	.021	.027	.019	.013	.009	.006	.004	
9.0	.072	.047	.030	.062	.041	.026	.043	.029	.019	.025	.017	.011	.008	.006	.004	
10.0	.067	.043	.026	.058	.037	.023	.040	.026	.016	.024	.015	.010	.008	.005	.003	

C Range: 0 - 360DEG
C Interval: 30.0DEG
Test Speed: HIGH
Temperature:25.3DEG
Operators:Zoe
Test Date:2022-12-12

Range: 0 - 180DEG
Interval: 1.0DEG
Test System:EVERFINE GO-SPEX500_V1 SYSTEM V2.00.416
Humidity:65.0%
Test Distance:3.160m [K=1.0000]
Remarks: LAMP:BXRE-30G1000-A-83 Ra:90
LENS: TH-YL5023H-24D 24R
DRIVER: RISE 120V 500mA
30minutes warm-up

UGR(Unified Glare Rating) Table

Test:U:120.03V I:0.1744A P:20.736W PF:0.9892 Freq:59.98Hz Lamp Flux:2052.9x1 lm										
NAME: 2319.200-H3AM-500					TYPE:			WEIGHT:		
SPEC.:3000K					DIM.:			SERIAL No.:2212121316		
MFR.: RISE					SUR.:0.002826m2			Shielding Angle:		
ceiling/cavity	0.7	0.7	0.5	0.5	0.3	0.7	0.7	0.5	0.5	0.3
walls	0.5	0.3	0.5	0.3	0.3	0.5	0.3	0.5	0.3	0.3
working plane	0.2	0.2	0.2	0.2	0.2	0.2	0.2	0.2	0.2	0.2
Room dimensions	Viewed crosswise					Viewed endwise				
x = 2H y = 2H	16.3	16.9	16.5	17.1	17.2	16.5	17.2	16.7	17.4	17.5
3H	16.2	16.9	16.5	17.0	17.2	16.5	17.1	16.8	17.3	17.5
4H	16.2	16.8	16.4	17.0	17.2	16.4	17.0	16.7	17.3	17.5
6H	16.1	16.6	16.4	16.9	17.1	16.4	16.9	16.6	17.2	17.4
8H	16.0	16.6	16.3	16.8	17.1	16.3	16.9	16.6	17.1	17.4
12H	16.0	16.5	16.3	16.8	17.0	16.3	16.8	16.6	17.1	17.3
4H 2H	16.3	16.9	16.5	17.1	17.3	16.5	17.1	16.8	17.3	17.5
3H	16.2	16.8	16.5	17.0	17.3	16.5	17.0	16.8	17.3	17.6
4H	16.1	16.6	16.5	16.9	17.2	16.4	16.9	16.7	17.2	17.5
6H	16.0	16.5	16.4	16.8	17.1	16.3	16.7	16.7	17.1	17.4
8H	16.0	16.4	16.4	16.7	17.1	16.3	16.7	16.6	17.0	17.4
12H	15.9	16.3	16.3	16.7	17.0	16.2	16.6	16.6	16.9	17.3
8H 4H	16.0	16.4	16.4	16.7	17.1	16.3	16.7	16.6	17.0	17.4
6H	15.9	16.2	16.3	16.6	17.0	16.1	16.5	16.6	16.9	17.3
8H	15.8	16.1	16.3	16.5	17.0	16.1	16.4	16.5	16.8	17.2
12H	15.8	16.0	16.2	16.5	16.9	16.0	16.3	16.5	16.7	17.2
12H 4H	15.9	16.3	16.3	16.7	17.1	16.2	16.6	16.6	16.9	17.3
6H	15.8	16.1	16.3	16.5	17.0	16.1	16.4	16.5	16.8	17.2
8H	15.8	16.0	16.2	16.5	16.9	16.0	16.3	16.5	16.7	17.2
Variations with the observer position at spacings:										
S = 1.0H	+ 1.4 / - 2.4					+ 1.3 / - 2.1				
1.5H	+ 1.0 / - 0.9					+ 1.2 / - 0.9				
2.0H	+ 2.8 / - 4.9					+ 2.7 / - 5.1				

CIE Pub.117, 2053 lm Total Lamp Luminous Flux Corrected ($8\log(F/F_0) = 2.5$)
Area: 0.002826 m2

C Range: 0 - 360DEG
C Interval: 30.0DEG
Test Speed: HIGH
Temperature:25.3DEG
Operators:Zoe
Test Date:2022-12-12

Range: 0 - 180DEG
Interval: 1.0DEG
Test System:EVERFINE GO-SPEX500_V1 SYSTEM V2.00.416
Humidity:65.0%
Test Distance:3.160m [K=1.0000]
Remarks: LAMP:BXRE-30G1000-A-83 Ra:90
LENS: TH-YL5023H-24D 24R
DRIVER: RISE 120V 500mA
30minutes warm-up

UTILIZATION FACTORS TABLE

Test:U:120.03V I:0.1744A P:20.736W PF:0.9892 Freq:59.98Hz Lamp Flux:2052.9x1 lm		
NAME: 2319.200-H3AM-500	TYPE:	WEIGHT:
SPEC.:3000K	DIM.:	SERIAL No.:2212121316
MFR.: RISE	SUR.:0.002826m2	Shielding Angle:

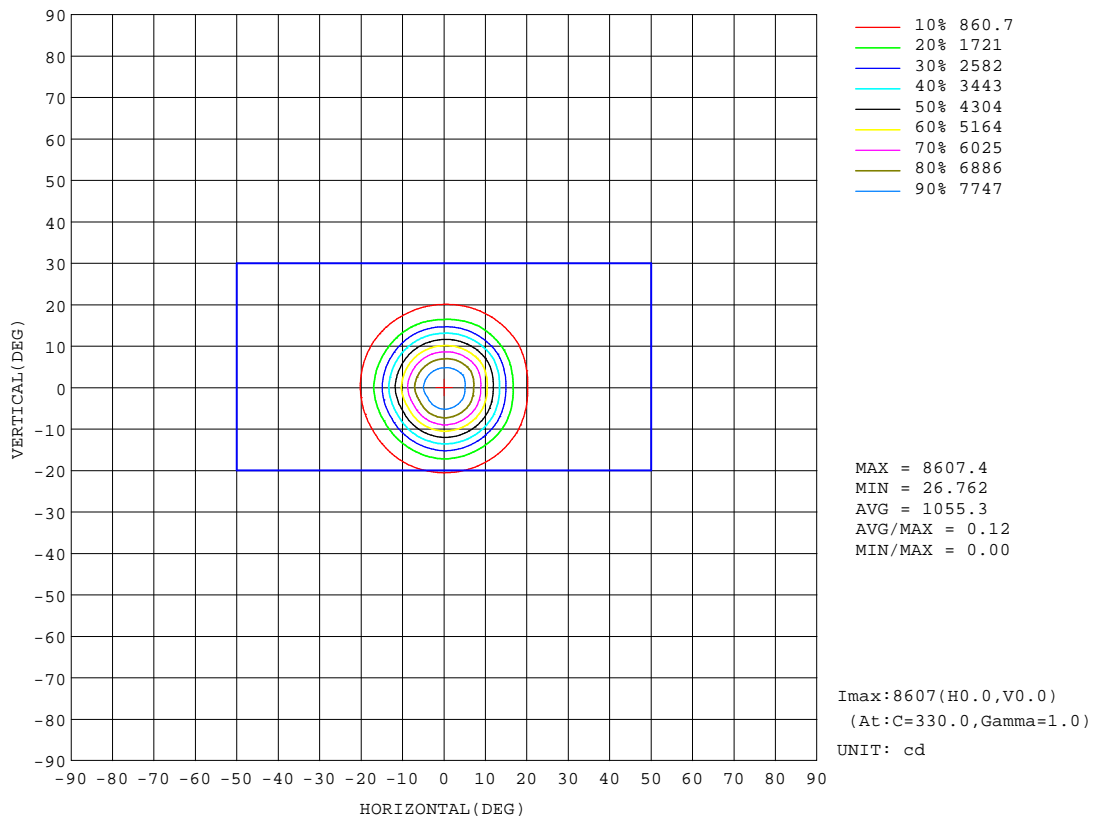
REFLECTANCE										
Ceiling	0.8	0.8	0.8	0.7	0.7	0.7	0.5	0.5	0.5	0
Walls	0.7	0.5	0.3	0.7	0.5	0.3	0.7	0.5	0.3	0
Working plane	0.2	0.2	0.2	0.2	0.2	0.2	0.2	0.2	0.2	0
ROOM INDEX	UTILIZATION FACTORS(PERCENT) $k(RI) \times RCR = 5$									
k = 0.60	75	70	67	75	70	67	74	69	66	63
0.80	81	76	73	81	76	73	80	76	73	70
1.00	85	80	77	84	80	77	83	80	77	73
1.25	88	84	81	87	83	81	86	82	80	77
1.50	90	86	84	89	86	83	87	85	82	79
2.00	92	89	86	91	88	86	89	87	85	80
2.50	94	91	88	93	90	88	90	88	86	81
3.00	95	92	90	94	91	89	91	89	87	82
4.00	97	95	93	95	93	92	92	91	89	83
5.00	98	96	94	96	94	93	93	92	91	84
ROOM INDEX	UF(total)									Direct
According to DIN EN 13032-2 2004			Suspended					SHRNOM = 1.25		

C Range: 0 - 360DEG
 C Interval: 30.0DEG
 Test Speed: HIGH
 Temperature:25.3DEG
 Operators:Zoe
 Test Date:2022-12-12

Range: 0 - 180DEG
 Interval: 1.0DEG
 Test System:EVERFINE GO-SPEX500_V1 SYSTEM V2.00.416
 Humidity:65.0%
 Test Distance:3.160m [K=1.0000]
 Remarks: LAMP:BXRE-30G1000-A-83 Ra:90
 LENS: TH-YL5023H-24D 24R
 DRIVER: RISE 120V 500mA
 30minutes warm-up

ISOCANDELA DIAGRAM

Test:U:120.03V I:0.1744A P:20.736W PF:0.9892 Freq:59.98Hz Lamp Flux:2052.9x1 lm		
NAME: 2319.200-H3AM-500	TYPE:	WEIGHT:
SPEC.:3000K	DIM.:	SERIAL No.:2212121316
MFR.: RISE	SUR.:0.002826m2	Shielding Angle:



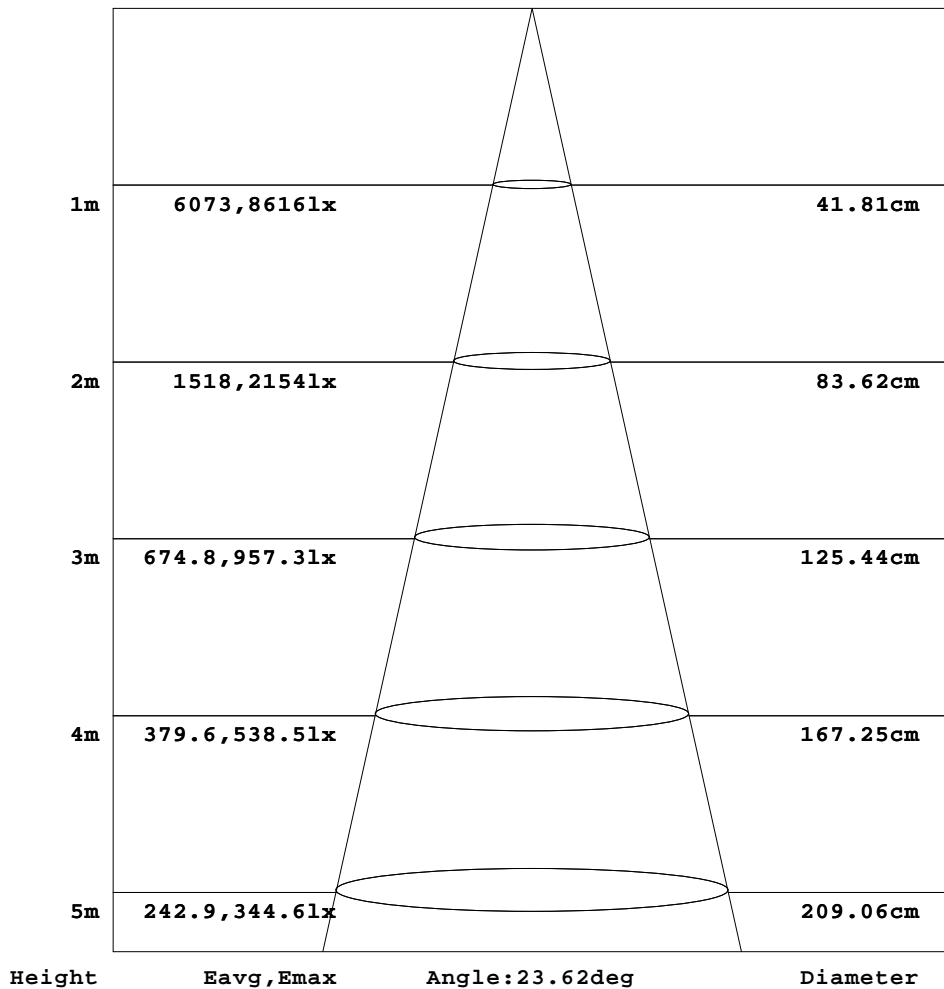
C Range: 0 - 360DEG
C Interval: 30.0DEG
Test Speed: HIGH
Temperature:25.3DEG
Operators:Zoe
Test Date:2022-12-12

Range: 0 - 180DEG
Interval: 1.0DEG
Test System:EVERFINE GO-SPEX500_V1 SYSTEM V2.00.416
Humidity:65.0%
Test Distance:3.160m [K=1.0000]
Remarks: LAMP:BXRE-30G1000-A-83 Ra:90
LENS: TH-YL5023H-24D 24R
DRIVER: RISE 120V 500mA
30minutes warm-up

AAI Figure

Test:U:120.03V I:0.1744A P:20.736W PF:0.9892 Freq:59.98Hz Lamp Flux:2052.9x1 lm		
NAME: 2319.200-H3AM-500	TYPE:	WEIGHT:
SPEC.:3000K	DIM.:	SERIAL No.:2212121316
MFR.: RISE	SUR.:0.002826m2	Shielding Angle:

Flux out:862.0 lm



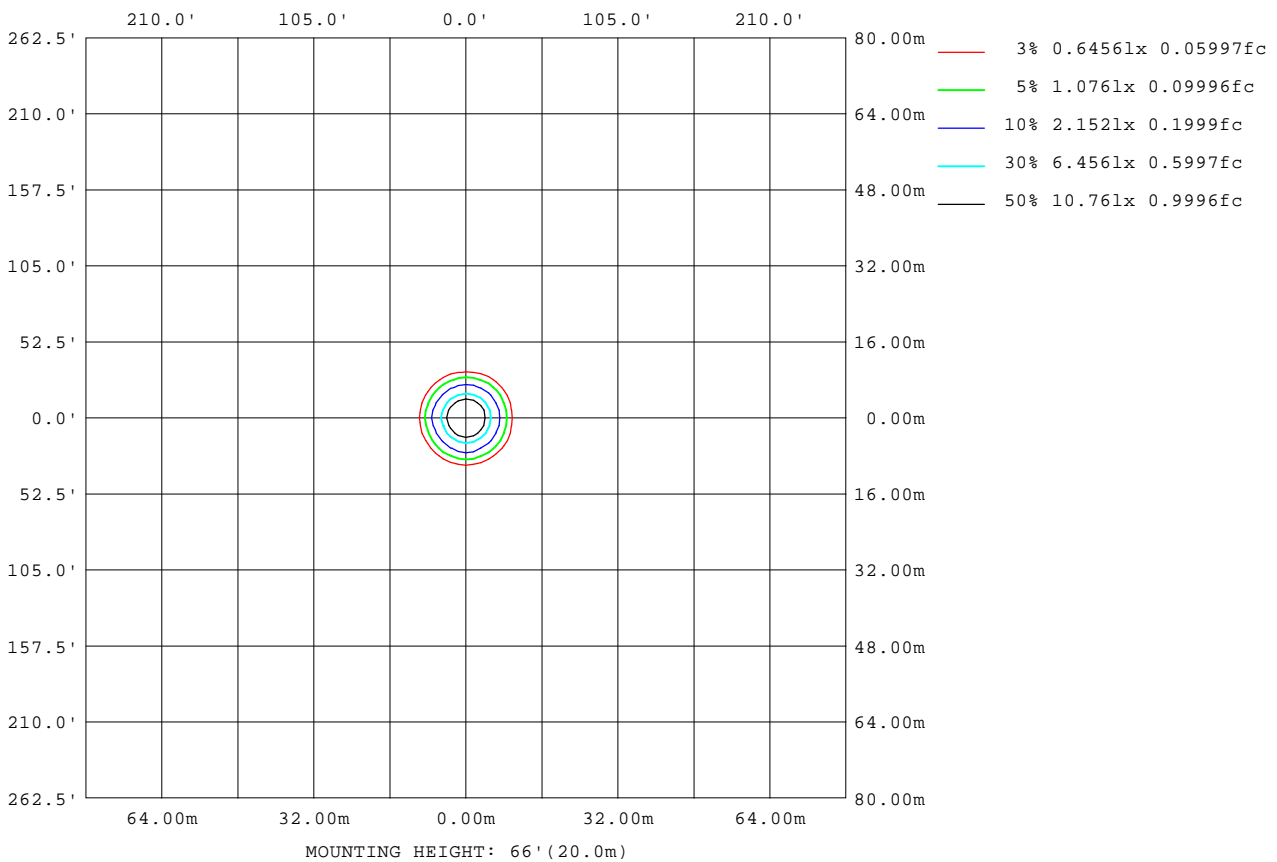
Note:The Curves indicate the illuminated area and the average illumination when the luminaire is at different distance.

C Range: 0 - 360DEG
C Interval: 30.0DEG
Test Speed: HIGH
Temperature:25.3DEG
Operators:Zoe
Test Date:2022-12-12

Range: 0 - 180DEG
Interval: 1.0DEG
Test System:EVERFINE GO-SPEX500_V1 SYSTEM V2.00.416
Humidity:65.0%
Test Distance:3.160m [K=1.0000]
Remarks: LAMP:BXRE-30G1000-A-83 Ra:90
LENS: TH-YL5023H-24D 24R
DRIVER: RISE 120V 500mA
30minutes warm-up

ISOLUX DIAGRAM

Test:U:120.03V I:0.1744A P:20.736W PF:0.9892 Freq:59.98Hz Lamp Flux:2052.9x1 lm		
NAME: 2319.200-H3AM-500	TYPE:	WEIGHT:
SPEC.:3000K	DIM.:	SERIAL No.:2212121316
MFR.: RISE	SUR.:0.002826m2	Shielding Angle:



C Range: 0 - 360DEG
C Interval: 30.0DEG
Test Speed: HIGH
Temperature:25.3DEG
Operators:Zoe
Test Date:2022-12-12

Range: 0 - 180DEG
Interval: 1.0DEG
Test System:EVERFINE GO-SPEX500_V1 SYSTEM V2.00.416
Humidity:65.0%
Test Distance:3.160m [K=1.0000]
Remarks: LAMP:BXRE-30G1000-A-83 Ra:90
LENS: TH-YL5023H-24D 24R
DRIVER: RISE 120V 500mA
30minutes warm-up

LED Avg.L Report

Test:U:120.03V I:0.1744A P:20.736W PF:0.9892 Freq:59.98Hz Lamp Flux:2052.9x1 lm		
NAME: 2319.200-H3AM-500	TYPE:	WEIGHT:
SPEC.:3000K	DIM.:	SERIAL No.:2212121316
MFR.: RISE	SUR.:0.002826m2	Shielding Angle:

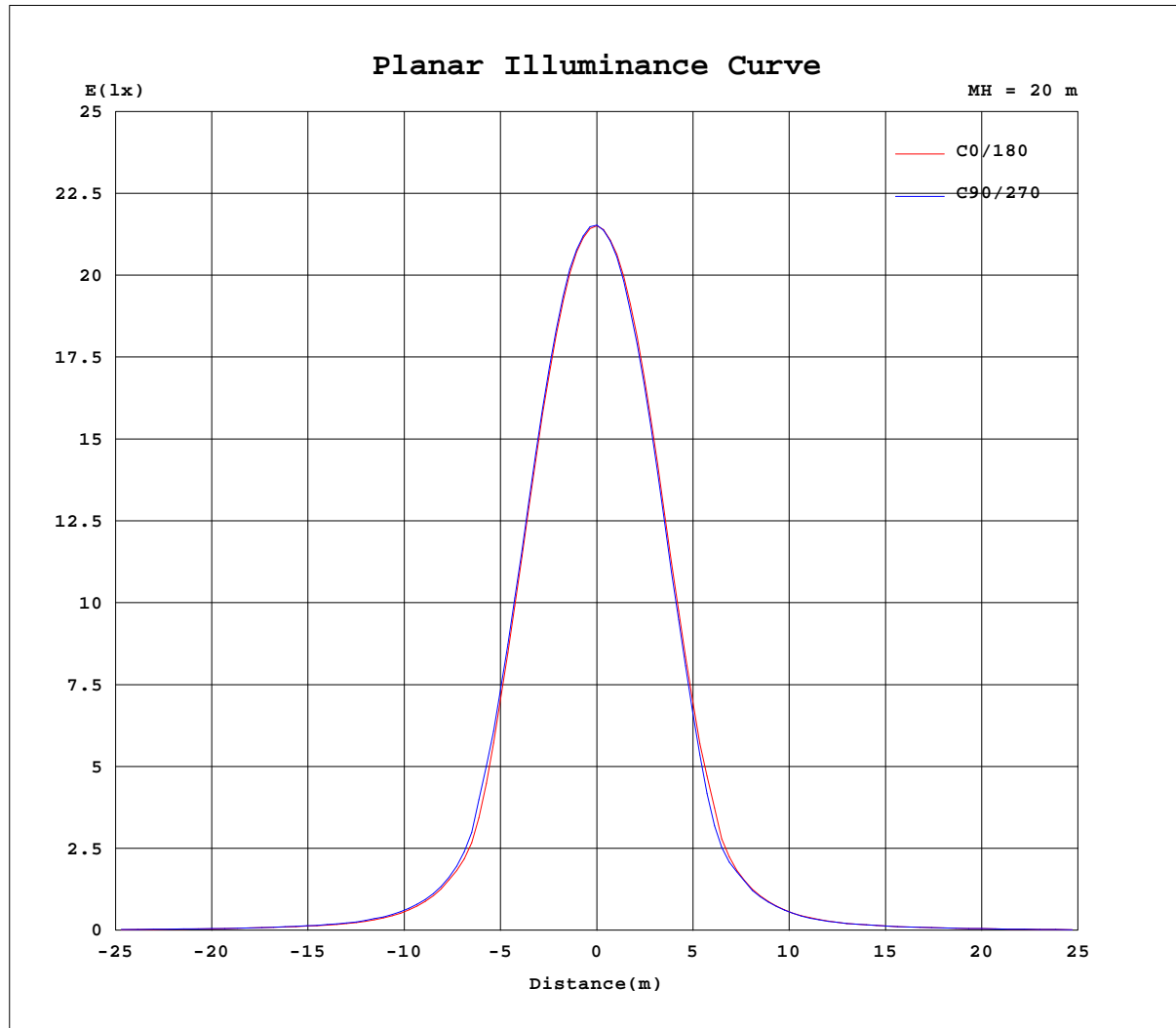
AvgL	cd/m2
L_0~180(65)av	6791
L_0~180(75)av	217
L_0~180(85)av	286
L_90~270(65)av	6804
L_90~270(75)av	247
L_90~270(85)av	240
L_45(65)av	6583
L_45(75)av	189
L_45(85)av	147

Standard: GB/T 29293-2012

C Range: 0 - 360DEG
C Interval: 30.0DEG
Test Speed: HIGH
Temperature:25.3DEG
Operators:Zoe
Test Date:2022-12-12

Range: 0 - 180DEG
Interval: 1.0DEG
Test System:EVERFINE GO-SPEX500_V1 SYSTEM V2.00.416
Humidity:65.0%
Test Distance:3.160m [K=1.0000]
Remarks: LAMP:BXRE-30G1000-A-83 Ra:90
LENS: TH-YL5023H-24D 24R
DRIVER: RISE 120V 500mA
30minutes warm-up

Planar Illuminance Curve



C Range: 0 - 360DEG
 C Interval: 30.0DEG
 Test Speed: HIGH
 Temperature: 25.3DEG
 Operators: Zoe
 Test Date: 2022-12-12

Range: 0 - 180DEG
 Interval: 1.0DEG
 Test System: EVERFINE GO-SPEX500_V1 SYSTEM V2.00.416
 Humidity: 65.0%
 Test Distance: 3.160m [K=1.0000]
 Remarks: LAMP: BXRE-30G1000-A-83 Ra: 90
 LENS: TH-YL5023H-24D 24R
 DRIVER: RISE 120V 500mA
 30minutes warm-up



LUMINOUS DISTRIBUTION INTENSITY DATA

Test:U:120.03V I:0.1744A P:20.736W PF:0.9892 Freq:59.98Hz Lamp Flux:2052.9x1 lm		
NAME: 2319.200-H3AM-500	TYPE:	WEIGHT:
SPEC.:3000K	DIM.:	SERIAL No.:2212121316
MFR.: RISE	SUR.:0.002826m2	Shielding Angle:

Table--1

UNIT: cd

C(DEG) (DEG)	0	30	60	90	120	150	180	210	240	270	300	330						
0	8612	8612	8612	8612	8612	8612	8612	8612	8612	8612	8612	8612						
5	7779	7850	7834	7835	7748	7622	7747	7676	7644	7653	7774	7903						
10	5409	5515	5486	5484	5305	5111	5328	5221	5182	5215	5389	5618						
15	2542	2681	2693	2699	2524	2408	2535	2414	2438	2380	2539	2726						
20	887	938	939	947	907	849	890	886	846	866	905	946						
25	404	436	426	430	413	388	402	397	395	396	426	429						
30	202	219	211	224	207	202	208	199	204	202	217	212						
35	123	129	129	132	127	122	126	124	124	126	129	129						
40	85.9	87.7	89.5	91.2	87.8	84.7	87.2	86.3	86.8	88.0	89.0	89.3						
45	64.0	65.4	66.2	67.2	65.4	64.3	64.9	63.9	64.8	65.2	65.8	66.5						
50	46.9	48.1	48.9	50.7	49.1	46.9	47.5	45.8	46.0	46.5	46.9	47.4						
55	31.6	32.8	33.4	34.6	33.2	31.7	32.1	30.3	30.1	30.1	31.2	32.0						
60	15.3	16.6	16.9	18.2	16.6	15.1	15.4	13.6	13.2	13.5	14.4	15.7						
65	8.11	8.22	8.34	8.88	8.44	7.89	8.11	7.27	7.11	7.37	7.69	8.16						
70	3.41	3.41	3.50	3.91	3.51	3.10	3.35	2.77	2.66	2.89	3.06	3.40						
75	0.17	0.17	0.22	0.26	0.17	0.14	0.15	0.11	0.09	0.10	0.10	0.14						
80	0.09	0.06	0.08	0.08	0.06	0.06	0.07	0.05	0.04	0.05	0.03	0.04						
85	0.08	0.05	0.06	0.07	0.04	0.04	0.06	0.04	0.03	0.05	0.03	0.03						
90	0.00	0.00	0.00	0.00	0.00	0.00	0.00	0.00	0.00	0.00	0.00	0.00						
95	0.00	0.00	0.00	0.00	0.00	0.00	0.00	0.00	0.00	0.00	0.00	0.00						
100	0.00	0.00	0.00	0.00	0.00	0.00	0.00	0.00	0.00	0.00	0.00	0.00						
105	0.00	0.00	0.00	0.00	0.00	0.00	0.00	0.00	0.00	0.00	0.00	0.00						
110	0.00	0.00	0.00	0.00	0.00	0.00	0.00	0.00	0.00	0.00	0.00	0.00						
115	0.00	0.00	0.00	0.00	0.00	0.00	0.00	0.00	0.00	0.00	0.00	0.00						
120	0.00	0.00	0.00	0.00	0.00	0.00	0.00	0.00	0.00	0.00	0.00	0.00						
125	0.00	0.00	0.00	0.00	0.00	0.00	0.00	0.00	0.00	0.00	0.00	0.00						
130	0.00	0.00	0.00	0.00	0.00	0.00	0.00	0.00	0.00	0.00	0.00	0.00						
135	0.00	0.00	0.00	0.00	0.00	0.00	0.00	0.00	0.00	0.00	0.00	0.00						
140	0.00	0.00	0.00	0.00	0.00	0.00	0.00	0.00	0.00	0.00	0.00	0.00						
145	0.00	0.00	0.00	0.00	0.00	0.00	0.00	0.00	0.00	0.00	0.00	0.00						
150	0.00	0.00	0.00	0.00	0.00	0.00	0.00	0.00	0.00	0.00	0.00	0.00						
155	0.00	0.00	0.00	0.00	0.00	0.00	0.00	0.00	0.00	0.00	0.00	0.00						
160	0.00	0.00	0.00	0.00	0.00	0.00	0.00	0.00	0.00	0.00	0.00	0.00						
165	0.00	0.00	0.00	0.00	0.00	0.00	0.00	0.00	0.00	0.00	0.00	0.00						
170	0.00	0.00	0.00	0.00	0.00	0.00	0.00	0.00	0.00	0.00	0.00	0.00						
175	0.00	0.00	0.00	0.00	0.00	0.00	0.00	0.00	0.00	0.00	0.00	0.00						
180	0.00	0.00	0.00	0.00	0.00	0.00	0.00	0.00	0.00	0.00	0.00	0.00						

C Range: 0 - 360DEG
C Interval: 30.0DEG
Test Speed: HIGH
Temperature:25.3DEG
Operators:Zoe
Test Date:2022-12-12

Range: 0 - 180DEG
Interval: 1.0DEG
Test System:EVERFINE GO-SPEX500_V1 SYSTEM V2.00.416
Humidity:65.0%
Test Distance:3.160m [K=1.0000]
Remarks: LAMP:BXRE-30G1000-A-83 Ra:90
LENS: TH-YL5023H-24D 24R
DRIVER: RISE 120V 500mA
30minutes warm-up